



32 Pershore house, Singapore Road, London, W13 0UL

Set on the 4th floor of the prestigious Pershore House development is this sizeable one-bedroom apartment with its own private resident's gym. The property makes an ideal rental investment or residential purchase.

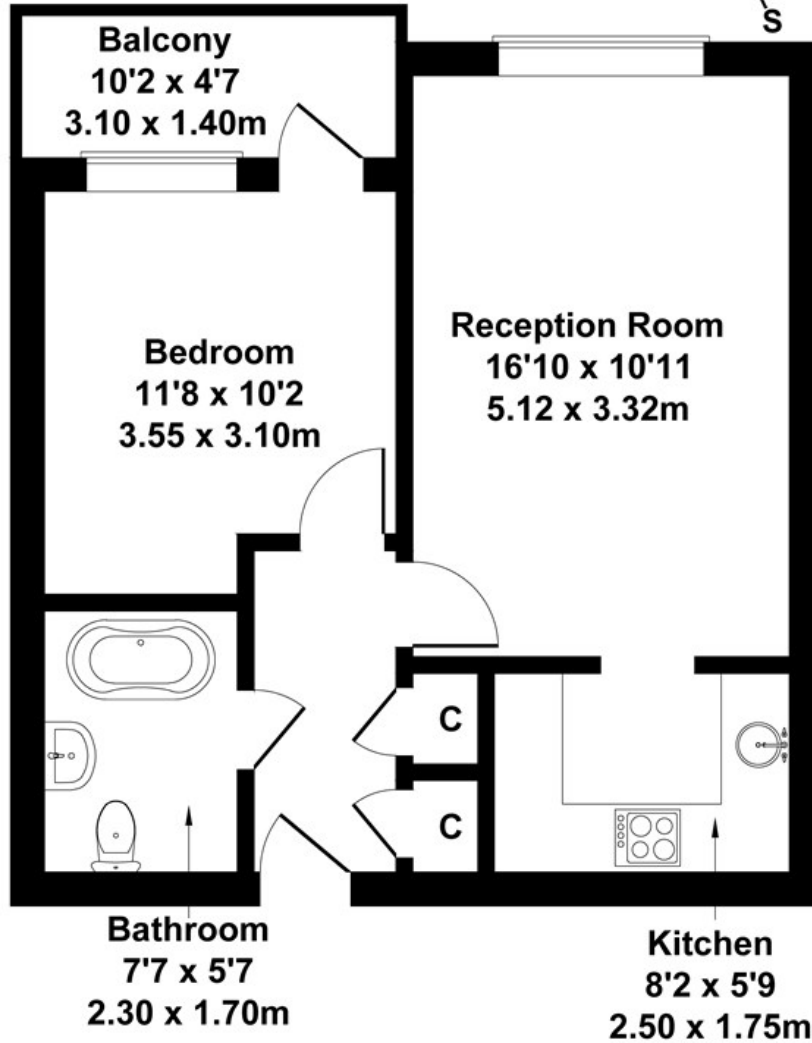
Pershore House is set in the heart of West Ealing, just moments from West Ealing station, an appointed 'Crossrail' station.

- Purpose built
- One bedroom
- Forth floor
- Residents Gym
- No chain
- Close to transport links
- Balcony
- Long Lease 137 years
- New Kitchen
- Crossrail close by

£315,000

Pershore House

Approximate Gross Internal Area
463 sq ft - 43 sq m



FOURTH FLOOR

Not to Scale. Produced by The Plan Portal 2023
For Illustrative Purposes Only.

Energy Efficiency Rating		
	Current	Potential
Very energy efficient - lower running costs		
(92 plus) A		
(81-91) B	82	86
(69-80) C		
(55-68) D		
(39-54) E		
(21-38) F		
(1-20) G		
Not energy efficient - higher running costs		
England & Wales	EU Directive 2002/91/EC	